

USER GUIDE

Interactive trail map and iMotoneige



Table of contents

• Functions and characteristics analysis	3
• Access to the interactive trail map and iMotoneige	4
• The menu	5
• The basemaps	6
• The Google Search function	9
• Types of services and amenities	10
• Positioning	12
• Mapping information	13
• The weather	17
• Creating an itinerary	20
• Sharing your itinerary	23
• Contact us	24

Functions and characteristics analysis

	Interactive trail map	iMotoneige
Use	Computers and tablets	Smart phones or tablets
Web browser	Google Chrome or Microsoft Edge	Data plan or cellular reception not necessary
The map bases	X	-
Creating and sharing your itinerary	X	X
Selecting trail conditions	X	Data plan and cellular reception is necessary
Position and tracking	-	Localisation access
Grooming	X	Data plan and cellular reception is necessary
Services and amenities	X	X
Certified trails (écoSentiers)	X	X
The search function	X	-
Available at	FCMQ.qc.ca	Google Play and App Store

Important : The Interactive trail map and iMotoneige do not use the same basemap.

Access to the interactive trail map and iMotoneige

Go to FCMQ.qc.ca to have access to the interactive trail map.

To purchase the iMotoneige app, go to the [Google play](#) or [App Store](#) platforms !!!



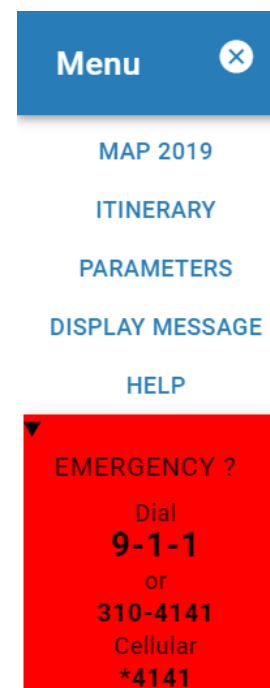
The Menu

(fonctions available on the interactive trail map and iMotoneige)

Menu Tab

Clic on the «  Menu » tab to have access to various information such as :

- Map
 - The in-season interactive map
- Itinerary
 - Access the itinerary map you have created
- Parameters
 - Of the interactive trail map or iMotoneige, according to use
- Display message
 - Important information from the FCMQ
- Help
 - Access to the User Guide of the interactive trail map and iMotoneige
- Emergency
 - Emergency numbers



The basemaps

(function not available on iMotoneige)

«Map» tab

You may choose from different basemaps.

- Maps without elevation
- Maps with elevation
- Satellite without labels
- Satellite with labels

Click on the «  » tab on the upper right hand side to see the map in full screen, and click again to return to the previous mode.

The basemaps

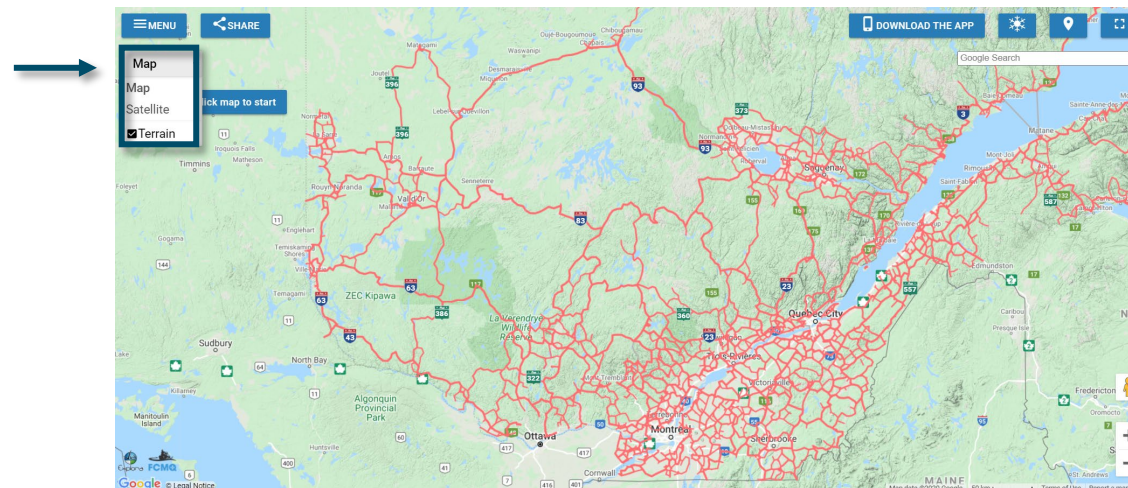
(function not available on iMotoneige)

«Map» tab

The basemap «Google with or without elevation»

Click in the box beside the name « Terrain » to choose this option, and watch the elevation appear in the basemap.

You may remove this function by clicking again in the box « Terrain ».



The basemaps

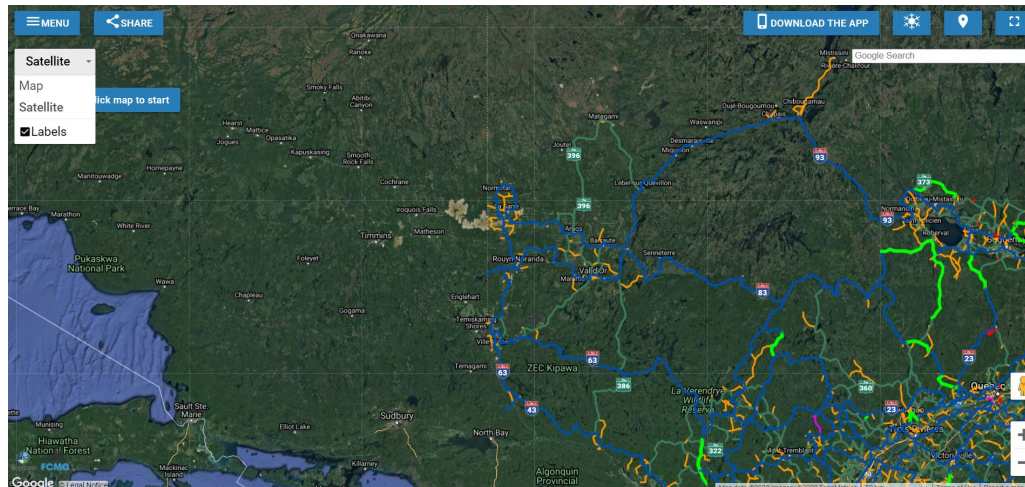
(function not available on iMotoneige)

«Satellite» tab

The basemap in «Satellite with or without labels» mode.

Click on the «Satellite» tab to select this function, and watch the basemap convert to satellite mode.

Click in the box beside «Labels» to select this option, and all other information, other than snowmobile trails will appear. You may remove this option by clicking once again inside the box beside «Labels».



Search for cities

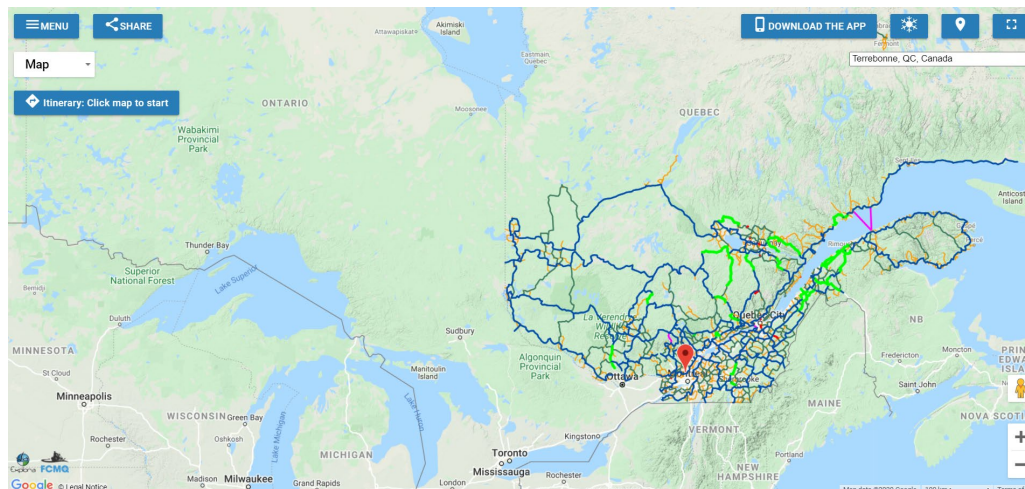
(function not available on iMotoneige)

«Google Search» tab

Available to search for a city on the upper right hand side.

Tap the first few lettres of the city you are looking for, and select from the suggested list of cities made available. A red marker will appear showing you the location of the desired city.

Important : If you tap the name of the city directly, and fail to choose one in the drop down menu, the location of the city will not be pointed out.



Types of services and amenities

(Function available on the interactive trail map and iMotoneige)

«Services» icon

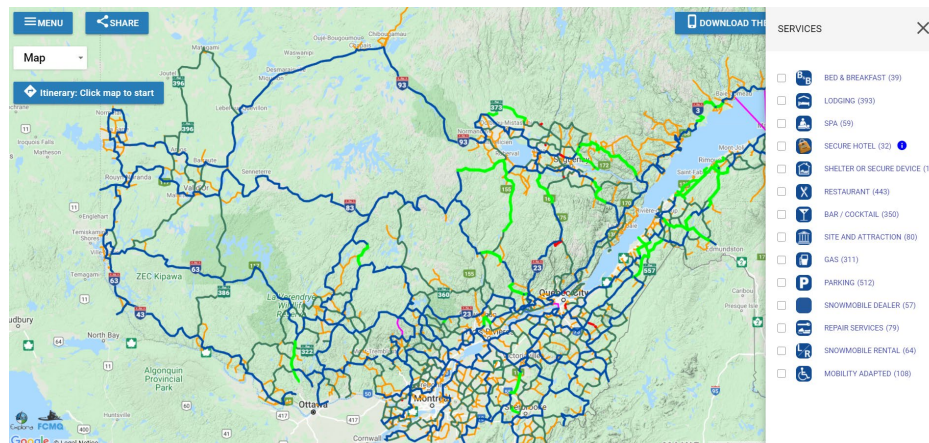


Click on the desired service to obtain the location of those types of businesses, registered towards their regional tourist association and the FCMQ, in Quebec.

Select all of the services to have them appear on the interactive trail map and iMotoneige.

When there are many «Services» or «businesses» at the same location, a blue circle with a number appears. Click on the number, an automatic zoom will focus and reveal each «service» or «business» available.

Important : Only the services and businesses registered towards their regional tourist association and the FCMQ, will appear on the interactive trail map and iMotoneige.



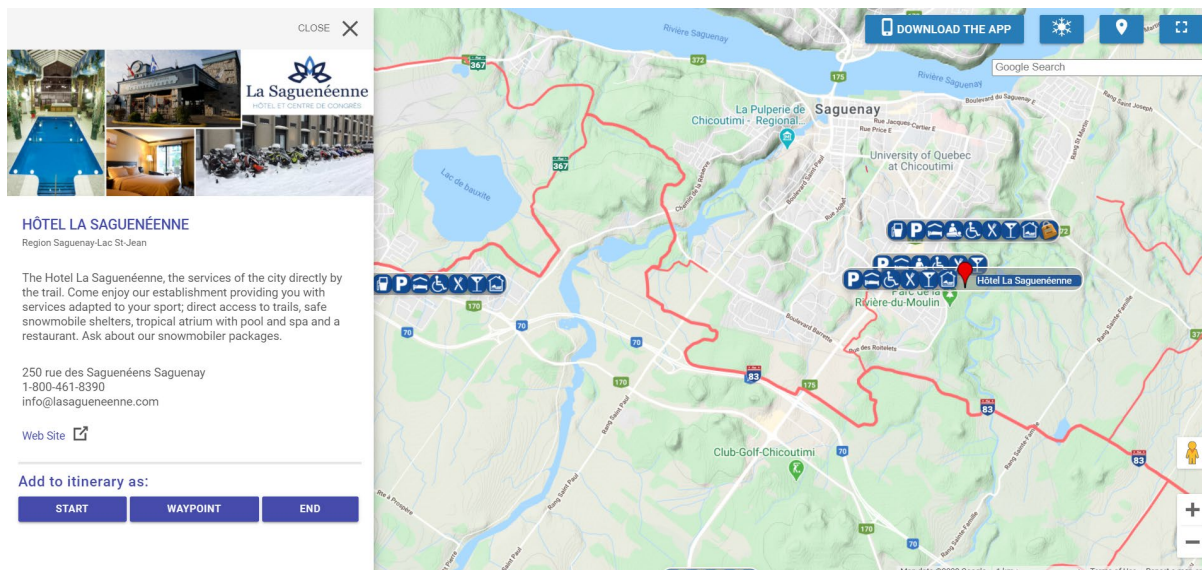
Types of services and amenities

(Function available on the interactive trail map and iMotoneige)

«Services» icon



Select the desired business to access the businesses information. Click on «web site»  in order to be redirected towards the its web site.



The screenshot displays a user interface for an interactive trail map. On the left, a sidebar shows a profile for "HÔTEL LA SAGUENÉENNE" in the Saguenay-Lac St-Jean region. The profile includes photos of the hotel's interior and exterior, a description of its services (pool, spa, restaurant, etc.), contact information (250 rue des Saguenéens, Saguenay), and a "Web Site" link. Below the profile are buttons to "Add to itinerary as: START", "WAYPOINT", or "END". On the right, a map of Saguenay shows the hotel's location marked with a red pin. The map includes various icons for services like parking, accessibility, and dining. At the top of the map, there is a "DOWNLOAD THE APP" button and a "Google Search" bar. The bottom of the map shows a scale bar and map data.

Positioning

(Function not available on the interactive trail map)

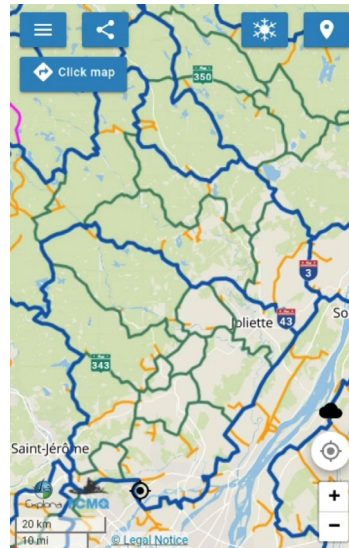
Positioning icon 

Click on the positioning icon to have the marker centered on your phone during your travels.

Cloud icon 

Indicates if the app has access to the internet.

If it doesn't have access to the internet, the map will display the original version when the app was first downloaded.



Mapping information

(Function available on the interactive trail map and iMotoneige)

«Snowflake» icon

Click on the snowflake icon to see the different types of trails

- Trails
 - Trans-Quebec
 - Regional
 - Local
 - Water ways
 - Closed
- ÉcoSentier
- Grooming
- Trail conditions

SNOW CONDITIONS

TRAILS

ÉCOSENTIER

TRAIL CONDITIONS

Conditions

Good

Acceptable

Closed

Unavailable

NO WEATHER LAYER

SNOW ON GROUND

Mapping information

(Function available on the interactive trail map and iMotoneige)

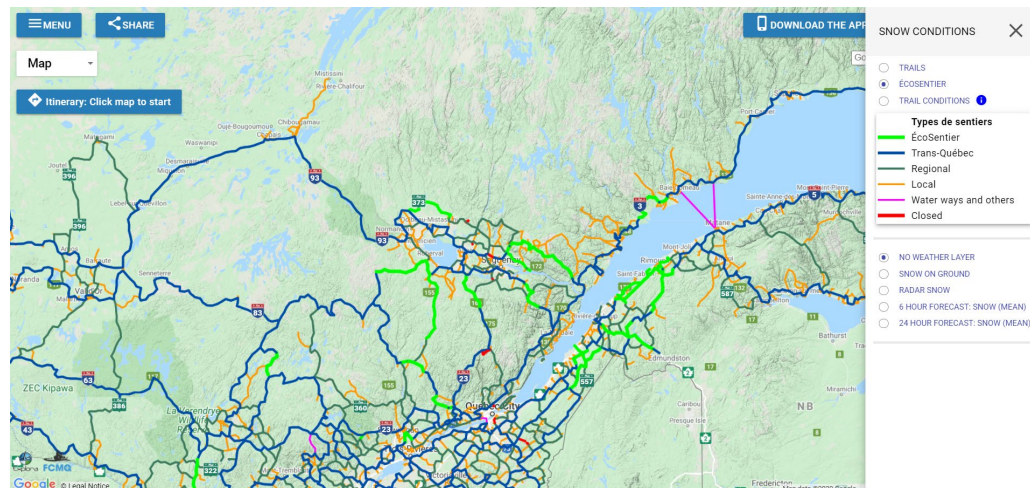
«Snowflake» icon 

The certified trails 

Click on «écoSentier», to see our cetified «écoSentier» trails.

The voluntary environmental certification program «écoSentier», offers environmental trail recognition, where, not only were their required practices of environmental snowmobile trail standards respected, but went beyond those standards, to ensure optimal trail management.

For more information, please consult the French only web site ecosentier.ca/fr



Mapping information

(Internet required on iMotoneige)

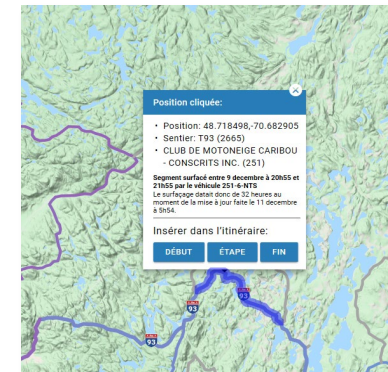
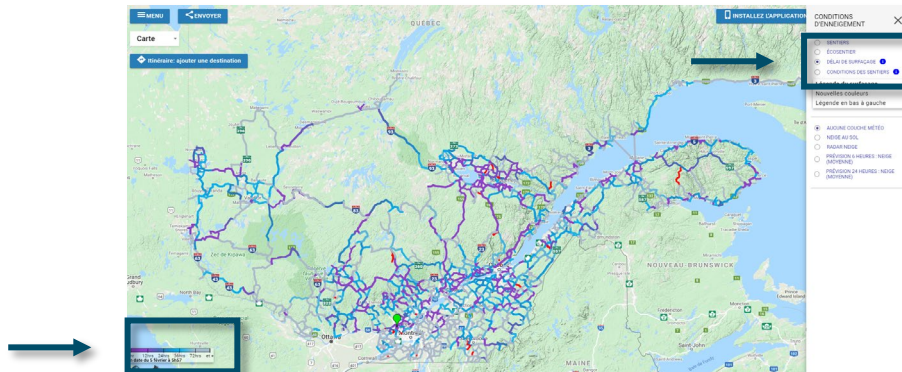
«Snowflake» icon 

Grooming (last grooming activity)

Click on «Grooming» to see the last grooming activity. The data is provided by the GPS inside the FCMQ member clubs' groomers. This data is provided twice daily.

The «Grooming» legend appears on the bottom left hand side.

«Zoom» and click on a trail to see the latest grooming information, which includes time and date of last activity and last information update.




Mapping information

(Internet required on iMotoneige)

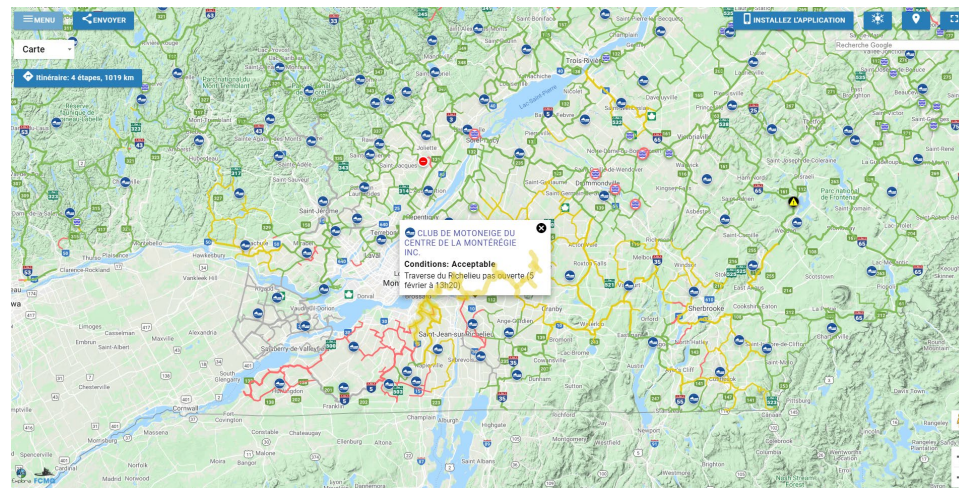
«Snowflake» icon 

Trail conditions ***NEW***

Click on «Trail conditions», to see the latest trail conditions.

By clicking on the «clubs icon» , you will see all of the clubs trails highlighted. The trail conditions are issued by the Regional Tourist Association (RTA) in collaboration with the FCMQ member clubs.

Click on the trail to see the last updated data.



The weather

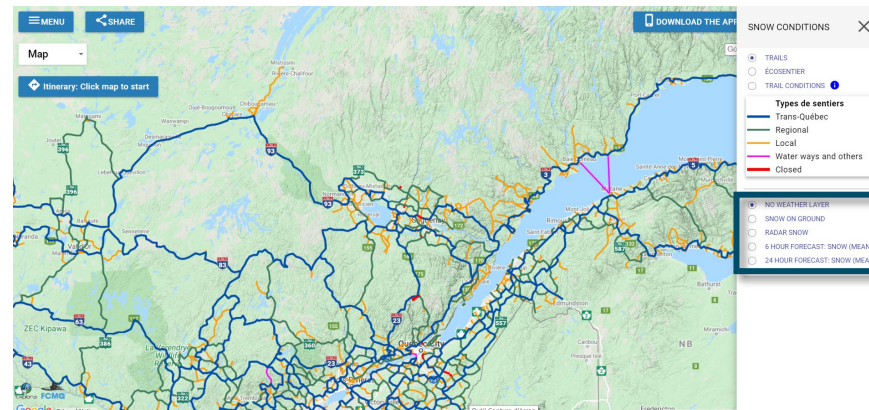
(Internet required on iMotoneige)

«Snowflake» icon 

See the weather forecasts provided by «Environnement Canada»

You have access to various information :

- No weather layer
- Snow accumulation
- Snow Radar
- 6 hour forecats : Snow (average)
- 24 hour forecast : Snow (average)



The weather

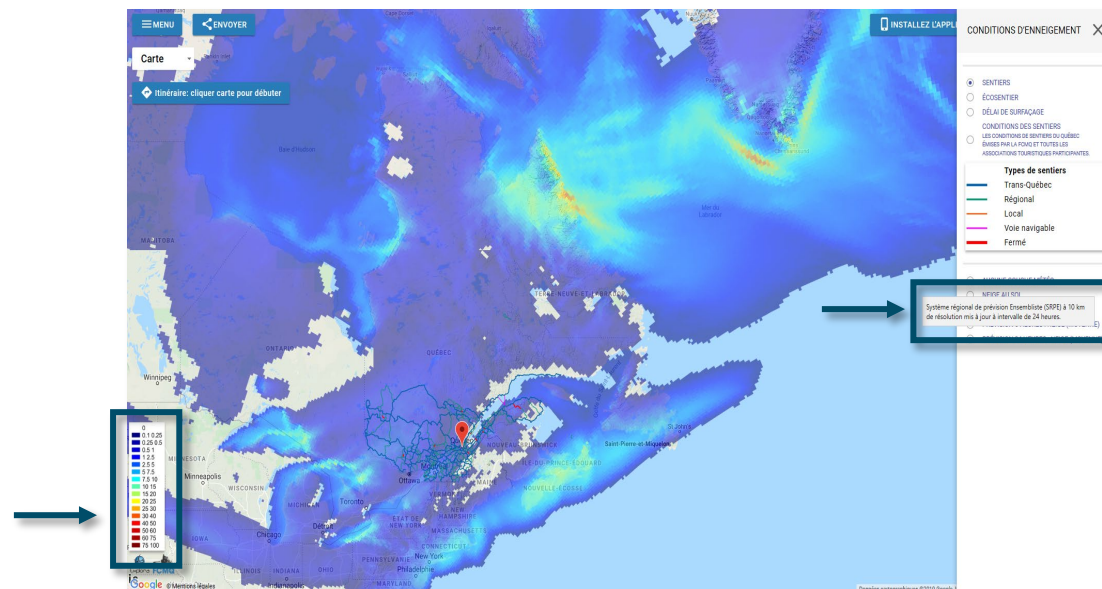
(Internet required on iMotoneige)

«Snowflake» icon

See the weather forecasts provided by «Environnement Canada»

Select the weather information you want, it will appear on the map

The legend appears on the bottom left.



The weather

(Internet required on iMotoneige)

«Snowflake» icon 

See the weather forecasts provided by «Environnement Canada»

Leave your pointer over the text of the condition you want, and watch additional information about the condition appear including last update.

- Snow accumulation
 - Global Deterministic Prediction System (GDPS) at 25 km resolution updated at 00UTC and 12UTC.
- Snow Radar
- 6 hour forecast : snow (average)
 - Regional Deterministic Prediction System (RDPS) at 10 km resolution updated at 00UTC, 6UTC, 12UTC and 18UTC.
- 24 hour forecast : snow (average)
 - Regional Deterministic Prediction System (RDPS) at 10 km resolution updated at 24-hour intervals.



FCMQ

LA FÉDÉRATION DES CLUBS DE
MOTONEIGISTES DU QUÉBEC

Creating an itinerary

(Function available on the interactive trail map and iMotoneige)

You have found the place where you wish to begin your trip

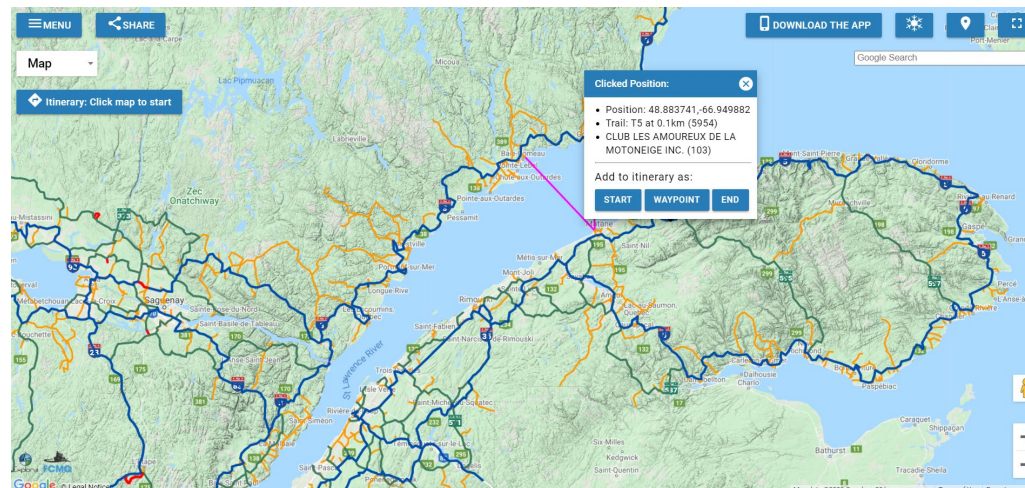
Click on the map at the place where you wish to begin creating your itinerary.

Chose «Start», a green marker will appear to begin your trip.

Chose «Waypoint», a red marker will appear to position a waypoint during your trip. The marker will turn yellow once you have chosen the end of your trip.

Chose «End», a red marker will appear to mark the end of your trip.

Important : An easier way is to click on «Start», and then always click «End» to add markers.



Creating an itinerary

(Function available on the interactive trail map and iMotoneige)

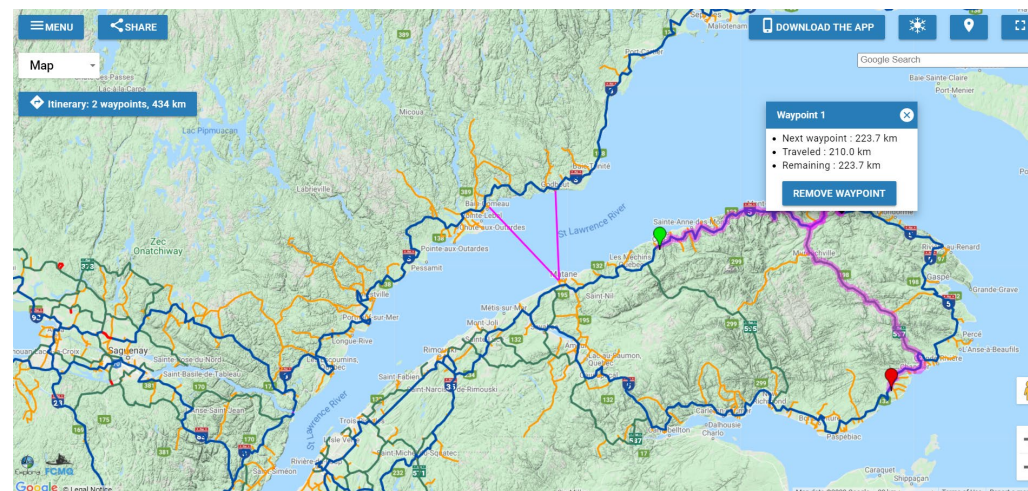
You have found the place where you wish to begin your trip

You may change a marker as you wish by clicking on it and dragging it to where you want.

To remove a marker, you may left click on it and then click remove, or simply right click on it.

The final itinerary will be highlighted in purple, and the total number of kilometers will be posted on the upper left hand side : «Itinerary : ____ waypoints ____ km».

Click on «Itinerary : ____ waypoints ____ km» to see the trip details.



Creating an itinerary






(Function available on the interactive trail map and iMotoneige)

You have found the place where you wish to begin your trip

Click on the «  itinerary » icon on the upper left hand side to see your itinerary.

Click on « Back to map  » on the upper right hand side to return to the map.

Click on the «  » icon to delete or change to miles your itinerary.

Itinerary 					BACK TO MAP 
▶ Start					
Next waypoint : 210.0 km					
Remaining : 433.7 km					
▼ Waypoint 1					
Next waypoint : 223.7 km					
Traveled : 210.0 km					
Remaining : 223.7 km					
	<i>at (km)</i>	<i>take</i>	<i>for (km)</i>	<i>total (km)</i>	
1	210.0	T5	39.4	39.4	
2	249.4	R597	129.7	169.1	
3	379.1	T5	54.6	223.7	
End					
Traveled : 433.7 km					

Sharing your itinerary

(Function available on the interactive trail map and iMotoneige)

You may share the itinerary you have created.

Click on the «  Share » icon.

Many options are available.

Click on the option of your choice and enter the necessary information to send your itinerary.

Share itinerary and map

Send your itinerary and your map settings (zoom, position, selected icons) by one of the ways below.

 SEND BY EMAIL

 DUPLICATE WITH FULL URL

Open a web page with the full URL. Useful to save in a bookmark!

 COPY URL

Copy the URL in the clipboard to paste it elsewhere.

 CANCEL

Contact us

You have a question on the use of the interactive trail map or iMotoneige app, visit the Frequently asked questions of the Quebec federation of snowmobile clubs.

We invite you to use the interactive trail map and the iMotoneige app, and share your comments on Google Play or App Store purchasing platforms.

Thank you and happy trails!